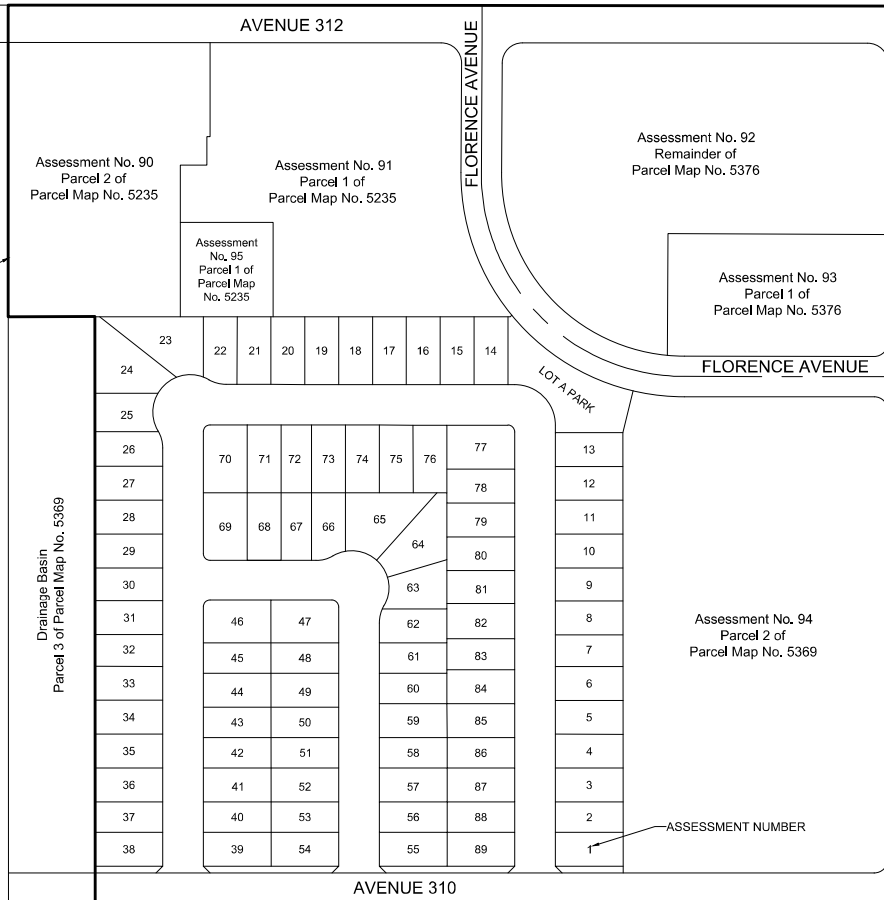




NOT TO SCALE

ASSESSMENT DISTRICT  
BOUNDARY



Filed in the office of the Clerk of the Board of Supervisors,  
this \_\_\_\_ day of \_\_\_\_\_, 20 \_\_\_\_

JASON T. BRITT, COUNTY ADMINISTRATIVE  
OFFICER/CLERK OF THE BOARD OF SUPERVISORS

BY \_\_\_\_\_  
DEPUTY CLERK

I hereby certify that the within map showing proposed boundaries of Assessment District  
No. 24-835-GOSHEN, of the County of Tulare, State of California, was approved by the  
Board of Supervisors of the County of Tulare at a regular meeting thereof, held on the  
\_\_\_\_ day of \_\_\_\_\_, 20 \_\_\_\_, by its Resolution No. \_\_\_\_\_.

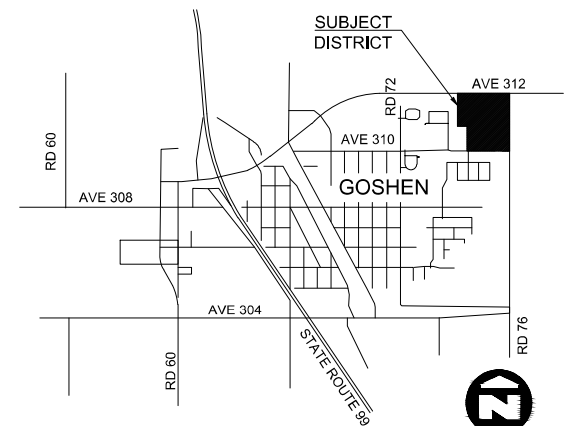
JASON T. BRITT, COUNTY ADMINISTRATIVE  
OFFICER/CLERK OF THE BOARD OF SUPERVISORS

BY \_\_\_\_\_  
DEPUTY CLERK

## PROPOSED BOUNDARIES

### ASSESSMENT DISTRICT NO. 24-835-GOSHEN OF THE COUNTY OF TULARE, STATE OF CALIFORNIA

BEING A PORTION OF THE NORTHEAST QUARTER OF SECTION 19,  
TOWNSHIP 18 SOUTH, RANGE 24 EAST, MOUNT DIABLO BASE &  
MERIDIAN, IN THE COUNTY OF TULARE, STATE OF CALIFORNIA



## VICINITY MAP

NOT TO SCALE

Filed this \_\_\_\_ day of \_\_\_\_\_, 20 \_\_\_\_ at the hour of \_\_\_\_ O'clock \_\_\_\_ .m.  
in book \_\_\_\_ of Maps of Assessment and Community Facilities Districts at  
page \_\_\_\_, in the office of the County Recorder in the County of Tulare, State of  
California.

DOC. NUMBER: \_\_\_\_\_ FEE PAID: \_\_\_\_\_

TARA K. FREITAS, CPA  
TULARE COUNTY ASSESSOR/CLERK OF RECORDER

BY \_\_\_\_\_  
DEPUTY RECORDER

1 SHEET ONLY