

Public Hearing to Approve Amendment to Franchise Agreements

Bryce Howard- Director
Tulare County Solid Waste



What is SB1383?

- ◆ Short Lived Climate Pollution (SLCP) Reduction Regulations
 - ◆ **State Mandated**
 - ◆ **Generator Responsible**
 - ◆ **Reduce Organics Disposal**

The 6 Main Elements of SB 1383





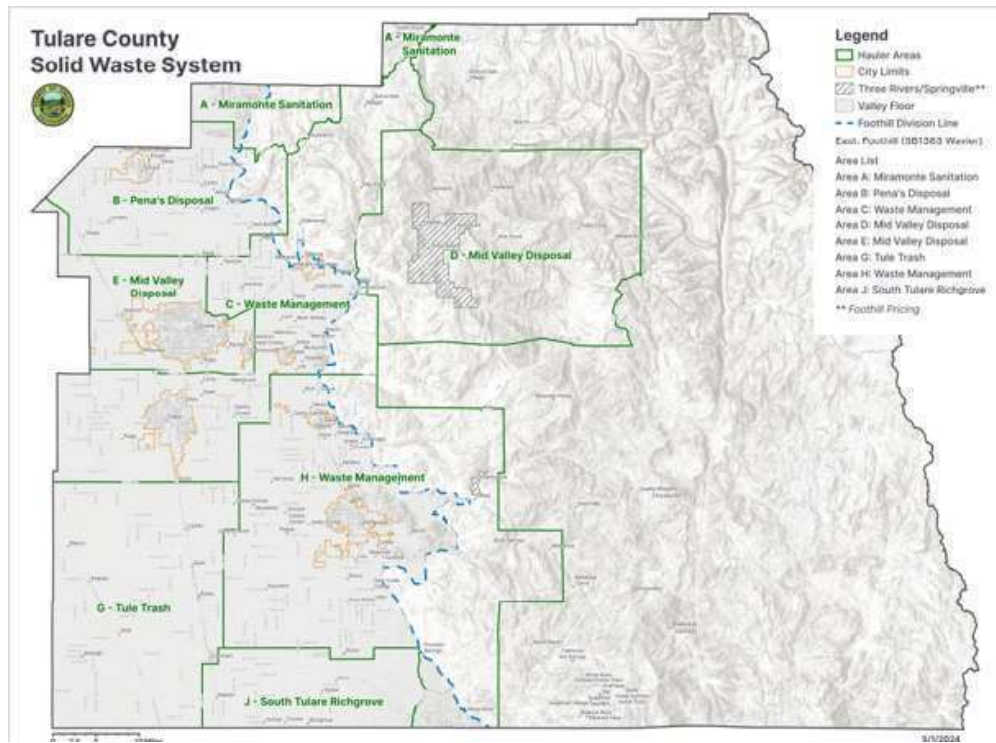
SB1383 Overview

- ◆ Edible Food Recovery
- ◆ Paper Procurement
- ◆ Organics Procurement
- ◆ Sludge Management
- ◆ **Generator Compliance through Collection Activities**

Changes to Franchise Agreements



- ◆ Generators will use **Green Card** for disposal of organic waste
- ◆ Haulers will conduct regularly scheduled **contamination monitoring** to ensure compliance
- ◆ Haulers will distribute **educational materials** on SB1383 requirements to customers prior to implementation date
- ◆ If generator does not comply with SB1383 requirements, **enforcement** steps will be taken
- ◆ Solid Waste Map revised to designate **two zones**: Valley Floor & Foothill
- ◆ Term Date extended to **June 30, 2039**
- ◆ Effective Date: **January 1, 2025**
 - ◆ Implementation Date: **April 1, 2025**



Solid Waste Map: 2 Zone System

Tulare County Unincorporated Proposed Rates- 90 Gallon Cart



- ◆ Current 90G Cart- Urban: \$33.83
- ◆ Current 90G Cart- Rural: \$35.26
- ◆ **Proposed 90G Cart- Valley Floor: \$37.26**
- ◆ % Increase: 6-10%
- ◆ Existing Commercial Organics Cart: 10% increase

Tulare County Municipal Rates- 90 Gallon Cart



- ◆ Dinuba: \$29.53
- ◆ Exeter: \$29.17
- ◆ Farmersville: \$27.35
- ◆ Lindsay: \$36.11
- ◆ Porterville: \$27.75
- ◆ Tulare: \$27.45
- ◆ Visalia: \$23.85
- ◆ Woodlake: \$32.00

Fresno County Rates- 90 Gallon Cart

- ◆ Zone 1: \$53.69
- ◆ Zone 2A- Existing: \$62.51
- ◆ Zone 2A- New: \$89.23
- ◆ Zone 2B: \$48.93
- ◆ Zone 3A: \$101.72
- ◆ Zone 3B: \$61.55
- ◆ City of Fresno: \$30.87



Department Requests

- ◆ Conduct a Public Hearing to approve the Franchise Hauler's maximum collection and ancillary rates for Service Areas A, B, C, D, E, G, H, and J.
- ◆ Approve the recommended maximum collection and ancillary rates per attached Exhibit B, effective April 1, 2025 through June 30, 2025.
- ◆ Approve amendment to Franchise Agreements with Pena's Disposal Service Inc. (27185), South Tulare Richgrove Refuse Inc. (27186), Tule Trash Company, LLC (27187), Miramonte Sanitation Inc. (27188), USA Waste of California (27189), and Mid-Valley Disposal LLC (27190) for Solid Waste Disposal Services, effective January 1, 2025 through June 30, 2039.
- ◆ Authorize the Chair to sign the Franchise Agreements.